

Tailored Selections

SPIRITS PORTFOLIO

COGNAC/BRANDY

Augier Cognac
Asbach Brandy
Le Reviseur Cognac
St. Remy Brandy

BITTERS

Jack Rudy
Bitter Cube
Bitter Truth

VERMOUTH/ MARSALA

Berto
Bertola
Mineo
Pellegrino
Valdepablo

LIQUEURS

Absente
Bareksten
Berto
Bitter Truth
Brezio
Chartreuse
Cointreau
Emperor Norton Absinthe
Heirloom
J. Poli
Lazzaroni

Letherbee
Moletto
Nannoni
Nardini
Økar
Otaola Pacharan Casero
Otto
Pellegrino
Post Modern
Tereo
Trader Vic's

RUM/RHUM/ AGRICOLE

Barbary Coast Agricole
Barbancourt
Black Tot
Brugal
Hart & Sons
High Wire Agricole
Corsair
Mount Gay
Rhum J.M.
Trader Vic's

AGAVE SPIRITS

Abre Ojos (Tequila)
Tequila Chamucos (Tequila)
Tequila Mi Casa (Tequila)
Derechito (Tequila)
Derrumbes (Mezcal)
Dos Hombres (Mezcal)

Fidencio (Mezcal)
Marca Negra (Mezcal)
María Isabel (Tequila)
La Higuera (Sotol)
La Venenosa (Raicilla)

VODKA

Altamura
Boyd & Blair
Corsair
High Wire
Post Modern
Wodka

NON-ALCOHOLIC

Blaum Brothers
Jack Rudy

MOONSHINE

Short Mountain

PISCO

Lapostolle

RTD

Berto
Originals & Co

BOURBON

2 Bar

Blaum Brothers

Element by Redline

Far North

Fugitives

High Wire

J.W. Kelly

James E. Pepper

Red Line

Rough Rider

Short Mountain

Tom's Town

WHISKEY BARREL SELECTIONS

Southern Collective

RYE WHISKEY

Blaum Brothers

Corsair

Far North

High Wire

James E Pepper

Post Modern

Red Line

Rough Rider

Ryskey

Short Mountain

Powers

SINGLE MALT WHISKEY

Corsair

Filey Bay

Hakata

Ikikko

Indri

Milk & Honey

Penderyn

Pōkeno

Post Modern

IRISH WHISKEY

Powers

Hell Cat Maggie

West Cork

AMERICAN WHISKEY

Fugitives

Glyph

Short Mountain

BLENDED WHISKEY

Kura

Bastille 1789

BLENDED SCOTCH

Harleston Green

MacNair's Rum Leek

Pig's Nose

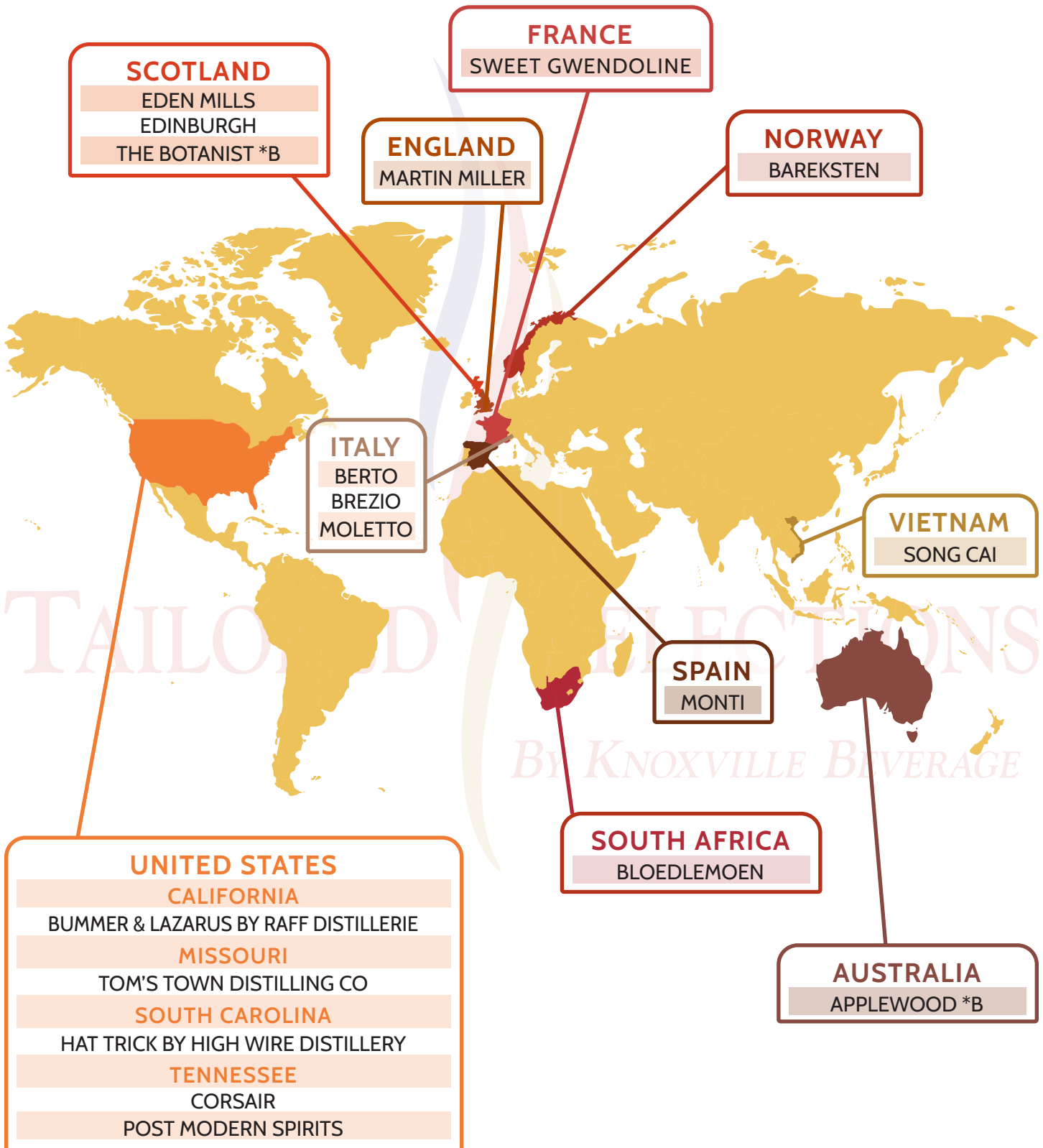
Sheep's Dip

TAILORED SELECTIONS

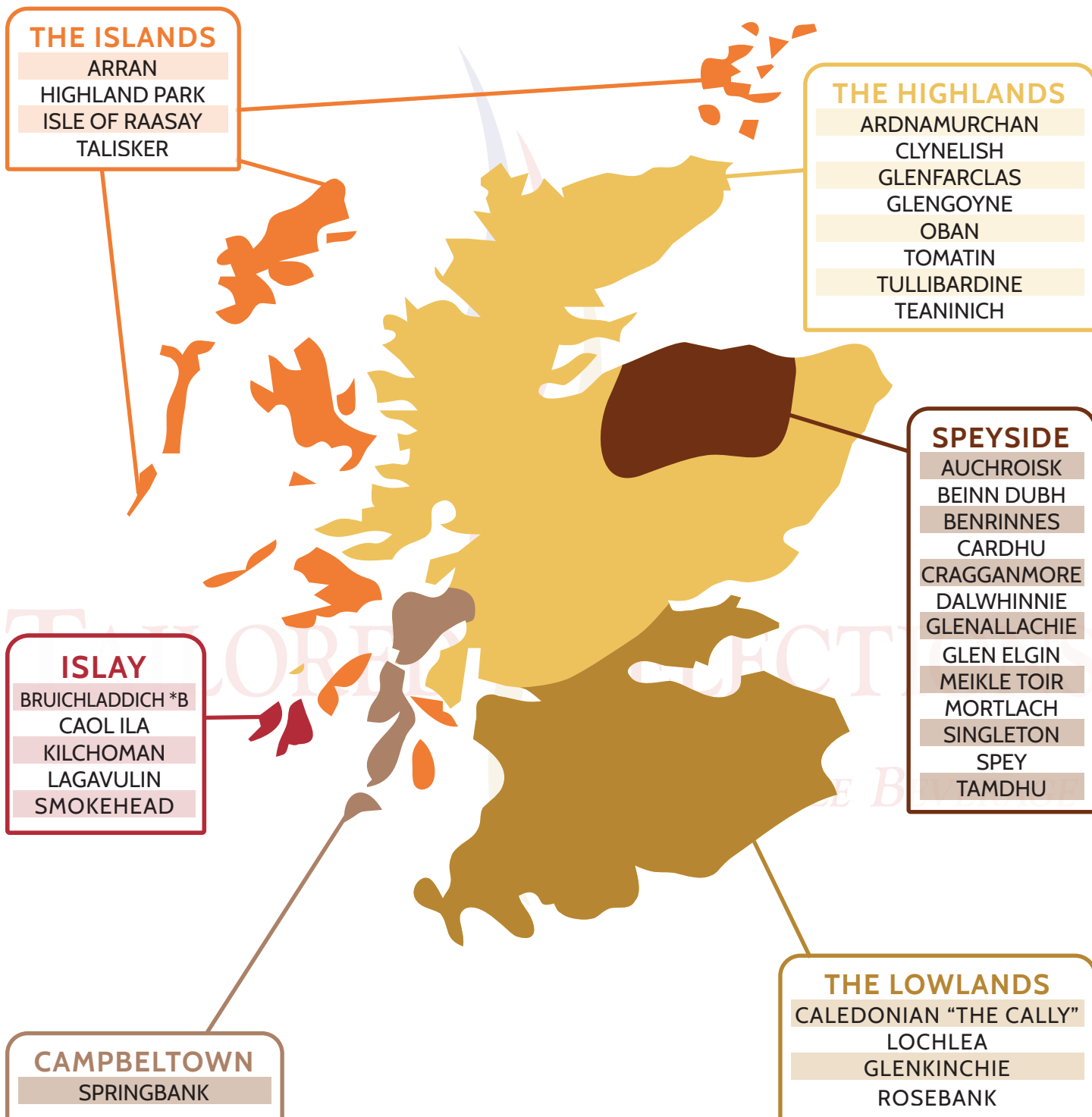
BY KNOXVILLE BEVERAGE

GIN SELECTIONS

- Around the World -



SINGLE MALT SCOTCH SELECTIONS



SINGLE MALT SCOTCH REGIONS

THE ISLANDS

This is technically part of the Highlands region – the islands are famed for extreme landscape and can be salty with peated smoke. These often intense maritime locations can create polarizing expressions.

THE HIGHLANDS

Middle of the Spectrum: subtle and floral with heather-honeyed tones (peat smoke can be found in coastal malts, for example Oban Distillery.) This is the largest region in land mass (technically it includes the Islands, but we have separated them because of the distinct flavor differences).

ISLAY (“EYE-LAY”)

These whiskies tend to be heavy with smoked peat & salinity creating complex layers. This region has eight operating distilleries. Whisky from the West coast of Islay can have oily, salty & somewhat medicinal characteristics.

SPEYSIDE

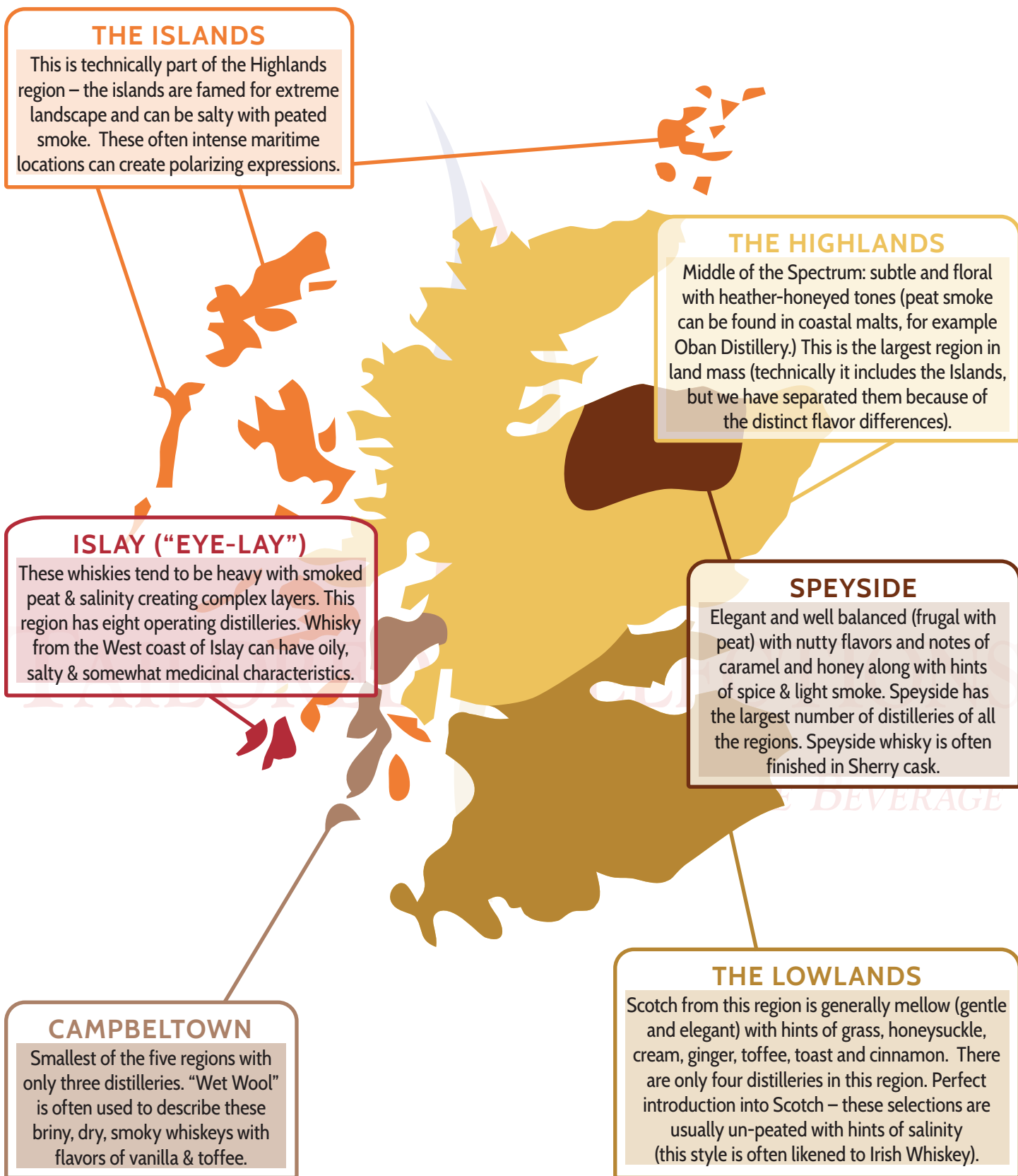
Elegant and well balanced (frugal with peat) with nutty flavors and notes of caramel and honey along with hints of spice & light smoke. Speyside has the largest number of distilleries of all the regions. Speyside whisky is often finished in Sherry cask.

CAMPBELTOWN

Smallest of the five regions with only three distilleries. “Wet Wool” is often used to describe these briny, dry, smoky whiskies with flavors of vanilla & toffee.

THE LOWLANDS

Scotch from this region is generally mellow (gentle and elegant) with hints of grass, honeysuckle, cream, ginger, toffee, toast and cinnamon. There are only four distilleries in this region. Perfect introduction into Scotch – these selections are usually un-peated with hints of salinity (this style is often likened to Irish Whiskey).



SINGLE MALT SCOTCH DISTILLERIES



THE ISLANDS DISTILLERIES

ARRAN – Distinctly citrus with varied peat levels. Founded in 1995.

HIGHLAND PARK – Aromatic & lightly smoky. Founded in 1798.

ISLE OF RASSAY – Lightly peated. Balanced with rich dark fruit flavor.

TALISKER – Peated, complex with salty, peaty notes. Founded in 1825.

THE HIGHLANDS DISTILLERIES

CLYNELISH – Waxy character, tropical fruit & honey. Founded in 1819.

GLENGOYNE – Dry & fruity (un-peated), borders the Lowlands. Founded in 1833.

OBAN – Full bodied, smoke & peaty. Founded in 1794.

TOMATIN – Mellow & fruity. Founded in 1897.

TULLIBARDINE – Light, floral & nutty. Founded in 1949.

ISLAY DISTILLERIES

BRUICHLADDICH – Unpeated, floral & complex. Founded in 1881.

CAOL ILA – Light, smokey & strong peat. Founded in 1846.

KILCHOMAN – Several varied expressions. Founded in 2005.

LAGAVULIN – Smoky, rich & powerful. Founded in 1816.

OCTOMORE BY BRUICHLADDICH – Heavily peated with softer smoke.

PORT CHARLOTTE BY BRUICHLADDICH – Experimental & heavily peated.

SMOKEHEAD – Bold with extreme peat.

SPEYSIDE DISTILLERIES

AUCHROISK – Light, fresh & citrus. Founded in 1974.

BEINN DUBH – “Black Mountain” produces thick & dark whisky. Founded in 1990.

BENRINNES – Sweet layers with a sherry aftertaste. Founded in the 1820s.

CARDHU – Smooth, balanced & silky. Founded in 1811.

CRAGGANMORE – Tart fruit, slightly peated & complex. Founded in 1869.

DALWHINNIE – Fresh floral, honey & slightly peated. Founded in 1897.

GLENALLACHIE – Light, malty undertones & delicate fruit. Founded in 2018.

GLENFARCLAS – Rich & matured in ex-Sherry casks. Founded in 1865.

MORTLACH – Full bodied, bold spice with a Sherry finish. Founded in 1823.

SINGLETON OF GLENDULLAN – Fresh, delicate & light. Founded in 1896.

SPEY BY SPEYSIDE DISTILLERY – Several varied expressions. Founded in 1990.

TAMDHU – Intense richness and always finished in Sherry casks. Founded in 1897.

CAMPBELTOWN DISTILLERIES

SPRINGBANK – Plenty of fruit & spice, lightly peated. Founded in 1828.

THE LOWLANDS DISTILLERIES

GLENKINCHIE – Fragrant & light. Founded in 1825.